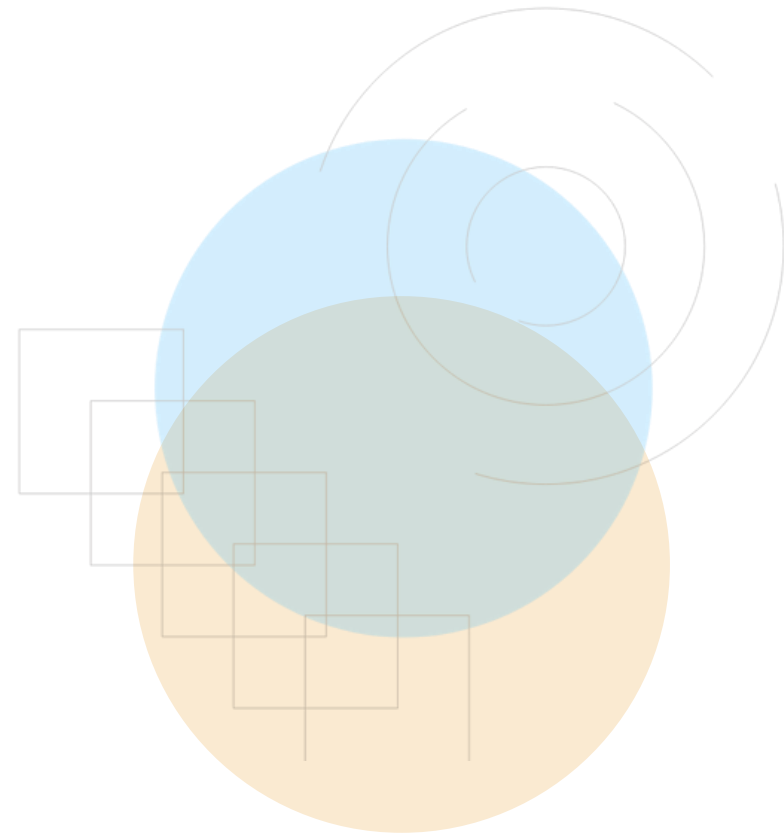


LATVIAN
RURAL
FORUM



LOCAL ACTION GROUPS' ACTIVITIES FOR CRISIS PREPAREDNESS, COMMUNITY RESILIENCE AND FAIR INFORMATION IN LATVIA

SUBGROUP ON LEADER

25.02.2026

Brussels, BELGIUM

Anita Seļicka



457 KM BORDER WITH
RUSSIA AND BELARUS

ADDITIONAL TO ALREADY EXISTING VOLUNTARY DEFENCE SERVICE

**NATIONAL DEFENCE SERVICE
INTRODUCED
IN 2023**

**CREATION OF NATIONAL
CRISIS MANAGEMENT CENTRE
IN 2025**

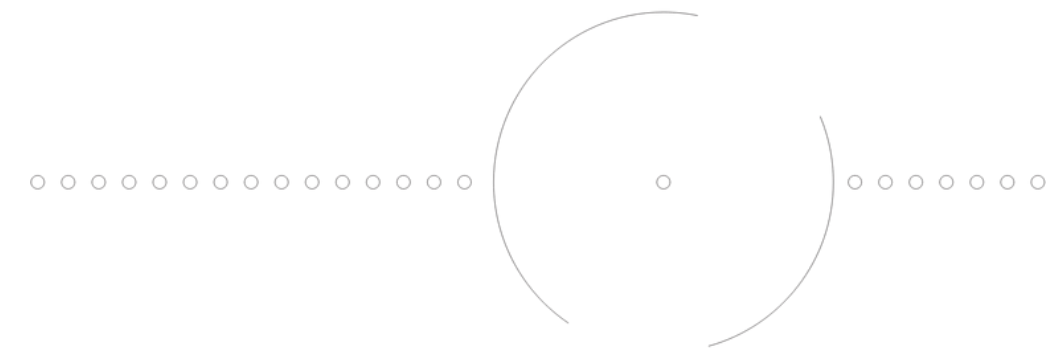
**DEFENCE BUDGET
(% OF GDP)**

2020 → 2026
2.18% → 4.9 %

SUPPORT TO UA - 0.25% OF GDP

REMOTE.
POTENTIAL FOR REVITALISATION.

EASTERN BORDER REGION

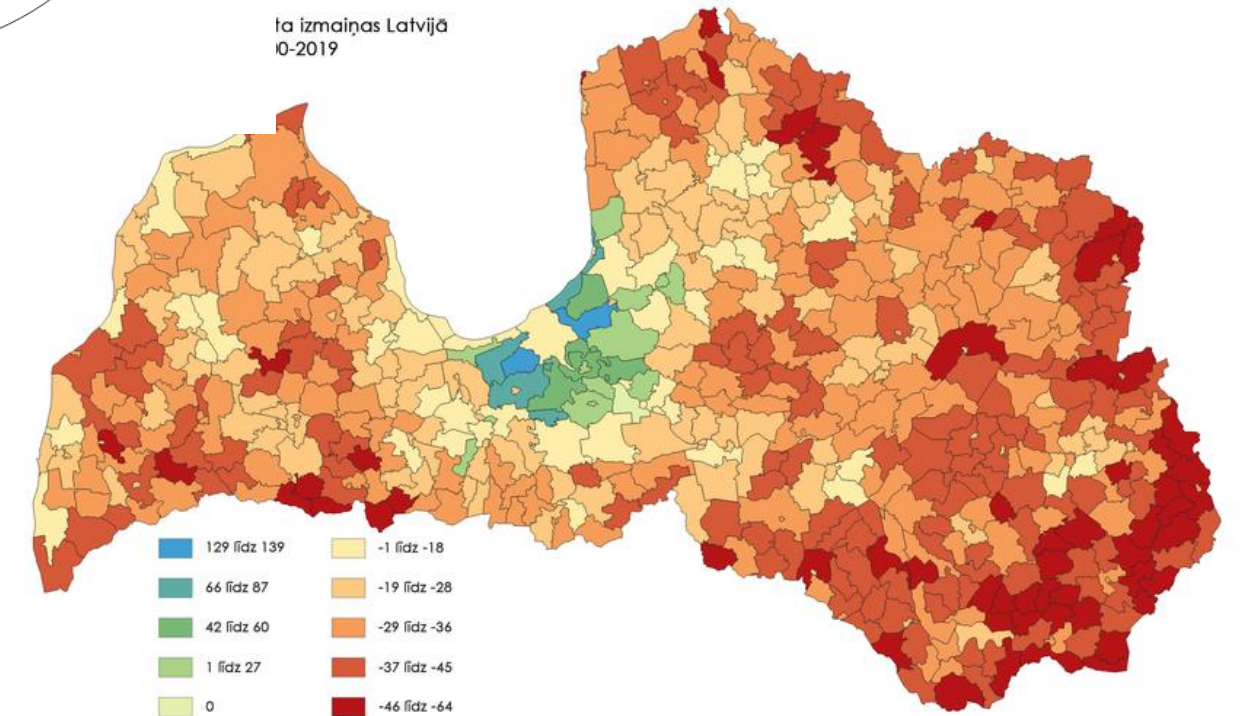
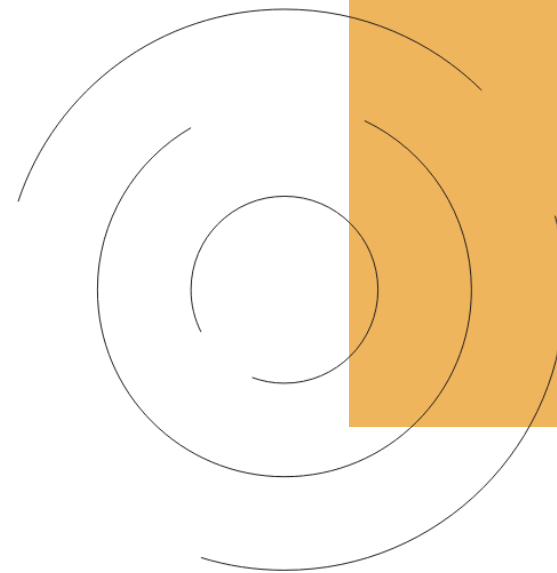


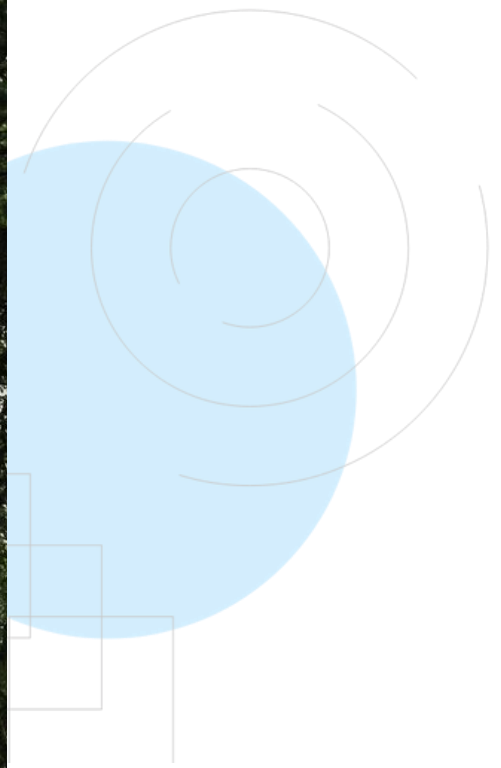
WAGE GAP
BETWEEN
RIGA AND LATGALE **34%**

LATGALE'S GDP
PER CAPITA IS
55%
OF THE NATIONAL
AVERAGE

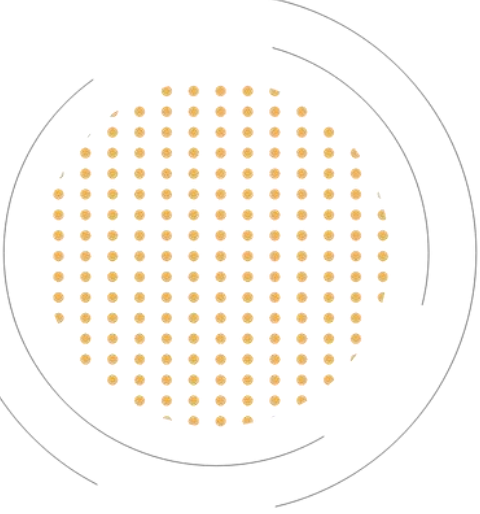
1.4% SHARE OF
RESIDENTIAL HOUSES
BUILT SINCE 2001
IN LATVIA 7.4%

35% SHARE OF CLOSED SCHOOLS
2011-2023
IN LATVIA 18%





**THE FIRST LINE OF DEFENCE
IS NOT THE ARMY.
IT IS SOCIETY.**

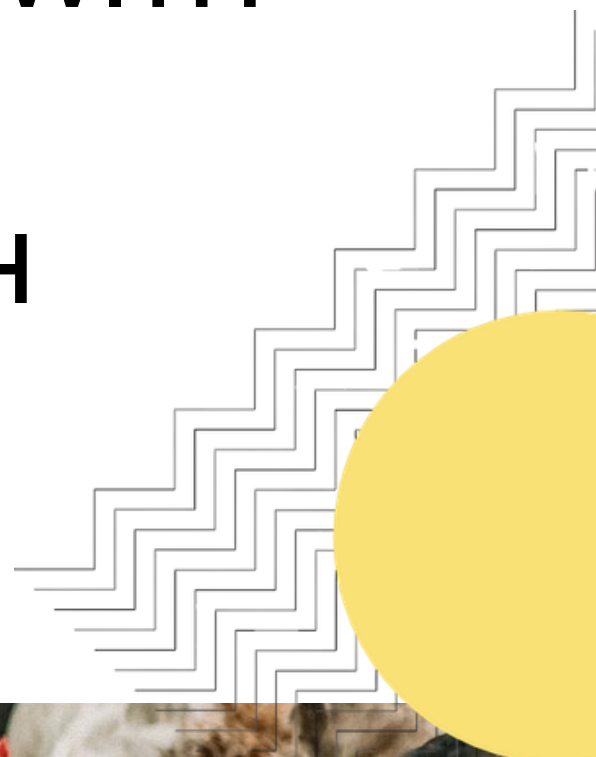


**37 CIVIL PROTECTION
COMMISSIONS,
FROM THOSE**

**3(+1) COMMISSIONS INCLUDE
NGO REPRESENTATIVES**

**LAGS BRING WORK WITH
the society**

**VS. WORK WITH
DOCUMENTS**





**BOTTOM-UP
TRUST BASED**

**FOR THE 1ST TIME NGOS ARE
WIDELY INVOLVED IN
**NATIONAL-SCALE
DEFENCE EXERCISES****

**CREATION OF NATIONAL
INFORMATION EXCHANGE
PLATFORM
UNITING DIFFERENT
STAKEHOLDERS**



NATIONAL COORDINATION - LOCAL ACTION

- **NATIONAL LEVEL NGO SELF-COORDINATION (CIVIC PROTECTION AND CRISIS PREPAREDNESS)**
- **STRENGTHENING THE ROLE OF COMMUNITIES AND SOCIETY IN TIMES OF CRISIS**
- **COMMUNITY LEADERS IMPLEMENTING PRACTICAL PREPAREDNESS ACTIONS**

LAGS AS LIGHTHOUSE ACTORS

POLICY DIALOGUES AND PRACTICAL ACTIONS

NATIONAL - LOCAL

**NO SPACE FOR
DISINFORMATION**

STRONG COOPERATION



INDRA KRĀSLAVA MUNICIPALITY

- POPULATION **517**
- PLANTED FRUIT TREES FOR THE **PANCAKE FESTIVAL**
- **MUSEUM OF HAPPINESS** IN THE ABANDONED CHURCH
- **MURALS** ON WALLS CREATED BY LOCAL YOUTH
- WEAVING AND **FOLK COSTUME** MAKING
- ...

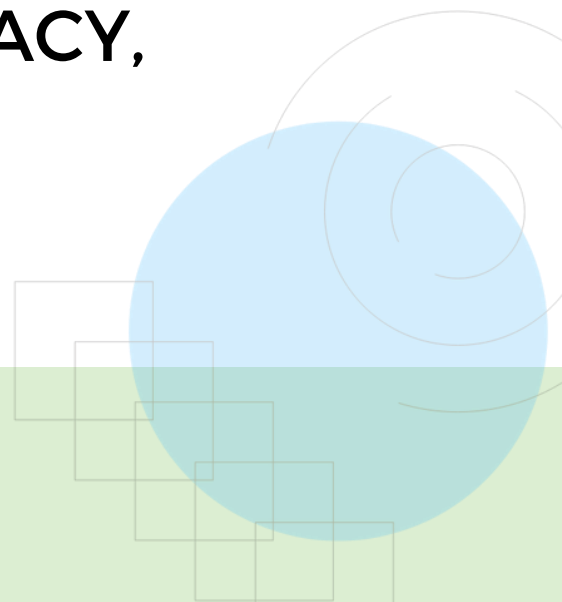




CRISIS MANAGEMENT. THEORY, MINDSET, PREPAREDNESS

- **EMERGENCY SKILLS** – FIRST AID, EVACUATION, RESPONSE ETC.
- **CYBER RESILIENCE** – INCIDENT RESPONSE SIMULATION ETC.
- **72-HOUR READINESS** – EMERGENCY BAG, REAL-LIFE FOREST TESTS ETC.
- **FAMILY PREPAREDNESS** – CAMPS FOR MOTHERS, DISCUSSIONS, WORK WITH SCHOOLS ETC.
- **COMMUNITY RESILIENCE** - MEDIA LITERACY, RESOURCE MANAGEMENT ETC.

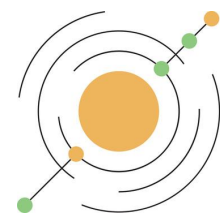
CULTURE. TOGETHERNESS. FUN.



**I AM THE FIRST RESPONDER
TO MY OWN FUTURE.**



Thank you!



LATVIAN
RURAL
FORUM